

Common Bees of Michigan

Honey bees

Apis mellifera - Our primary managed pollinator. Honey bees are native to Europe.



Green sweat bees

Four types of green bees occur in Michigan in spring and summer. Some nest in logs others in the ground.



Bumble bees

Bombus spp. - Easily recognized, bumble bees are important native pollinators.



Dark sweat bees

Lasioglossum spp. and *Halictus* spp. - Easily missed, but these are both abundant and diverse native bees.



Long-horned bees

Melissodes spp. - These bees, named for the long antennae of males, mostly visit composite flowers in summer.



Masked bees

Hylaeus spp. - Small, wasp-like bees that nest in small stems. Females carry pollen back to the nest internally.



Cuckoo bees

Nomada spp. - Wasp-like bees commonly seen flying near the ground looking for miner bee nests.



Cellophane bees

Colletes spp. - Line cells of their nests with a cellophane-like material. They nest in the ground.



For information on bee friendly native plants and how to support pollinators visit:
www.nativeplants.msu.edu
www.xerces.org

Common Bees of Michigan

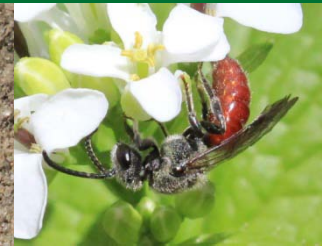
Mason bees

Osmia spp., *Hoplitis* spp. and *Heriades* spp. - Managed *Osmia* pollinate orchard crops. Occur mostly in Spring.



Cuckoo sweat bees

Sphecodes spp. - Invade the nests of other sweat bees. They are easily recognized by their black and red color.



Leaf-cutter bees

Megachile spp. - Cut or masticated leaf pieces in the construction of their nests. Nest in cavities or in ground.



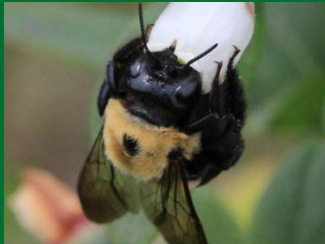
Wool-carder bees

Anthidium spp. - Most common species are accidental introductions from Europe. They line nests with plant hairs.



Carpenter bees

Xylocopa virginica - Common in urban areas. Excavate nests in dead wood. Males have yellow faces.



Miner bees

Andrena spp. - Diverse and abundant, mostly in Spring. Ground-nesting and often specialize on particular flowers.



Dwarf carpenter bees

Ceratina spp. - Very abundant throughout the summer. They nest in old stems and visit a variety of flowers.



Squash bees

Peponapis pruinosa - Solitary ground-nester, only visits the flowers of squash and related crop species.



For information on bee friendly native plants and how to support pollinators visit:
www.nativeplants.msu.edu
www.xerces.org